



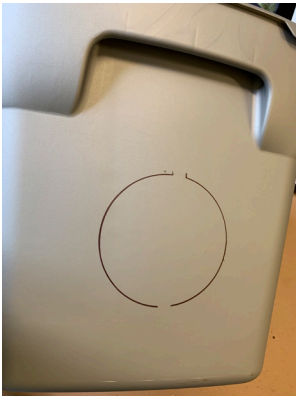
## HOW TO BUILD A COMMUNITY CAT SHELTER



### SUPPLIES LIST:

- 1 - 30-gallon plastic tote with lid
- 1 - Styrofoam cooler (we used 16X23X13. Coolers can be a little smaller. It needs to be large enough for a cat to fit comfortably inside, but small enough to fit inside the plastic tote)
- 1 - sharpie
- 1 - tape measure or ruler
- 1 - utility knife/pocket knife/scissors
- 1 - hair dryer
- (optional) Packaging tape

### DIRECTIONS:



- 1) Using the sharpie, draw a 5-6 inch circle about 5 inches from the bottom of the plastic tote. The circle needs to be large enough for a cat's head to fit through. If you make this opening too large, other animals, like raccoons or opossums may take up residence instead.



- 2) Use the hairdryer to heat up the plastic where you drew the circle. The warmer the plastic is, the easier it will be to cut.

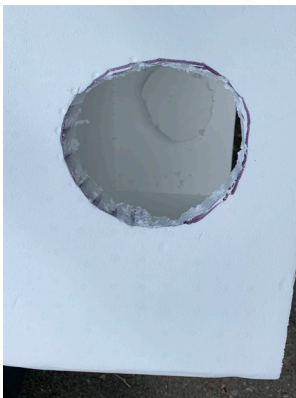
## DIRECTIONS, CONT.:



- 3) Use the knife to cut carefully through the warmed plastic along the sharpie circle.



- 4) Next, place the Styrofoam cooler inside the tote. Note: we turned our cooler sideways to fit easily into the tote. Use the hole you cut in the plastic tote as an outline to draw another circle on the Styrofoam cooler. This will allow the entrances in both boxes to line up.



- 5) Remove the cooler from the tote and use your knife to carefully cut a hole in the cooler along the sharpie circle.



- 6) Place the completed cooler inside the tote, with the new hole you cut aligned with the one in the tote.

If needed, use packaging tape to secure the lid of the cooler in place. Place the lid on the plastic tote.

**CONGRATULATIONS!**



**You made a well-insulated home for an outdoor cat (or two)!**